

Read carefully the following directions and order your standard-type or customised suit.

The following suits: IA01801 'Pilota' suit - IA01802 'Trend 2' suit - IA01803 'Super First 2' suit - cannot be customised.

SIZE

Please compare your measurements with the measurements you read in the following table so to identify your exact size.

If you wish to buy a made-to-measure suit, please fill in the 'made-to-measure suit' form which you find attached to the order form.

Extra code to be indicated if you wish to order a made-to-measure suit: IA/724

PATTERNS AND COLOURS

Suits are not only available in the standard patterns and colours, they can also be customised: if you wish to receive more information, please contact our commercial department.

Extra code to be indicated if you wish to order a custom-made coloured suit: IA/725/C

EMBROIDERIES

If you wish to have embroideries sewn on to the belt of your suit, please indicate your name and blood group by using one of the two types of font indicated in the order form. If you wish to have special or customised embroideries sewn on to your suit, please send us a detailed drawing and indicate size and colours of the embroideries. Use the order form to indicate the position of the embroideries on your suit, you can have a specific cost estimate for your custom-made suit.

Extra code to be indicated to have embroideries sewn on to the suit belt: IA/690

HOW TO TAKE WEARERS' MEASUREMENTS

A - CHEST - circumference measure just under the wearer's arms; keep your arms along your body.

B - WAISTLINE - waistline circumference.

C - PELVIS - pelvis circumference; measurements to be taken at the largest point of the buttocks.

D - THIGH - thigh circumference; measurements to be taken at the largest point of the thigh.

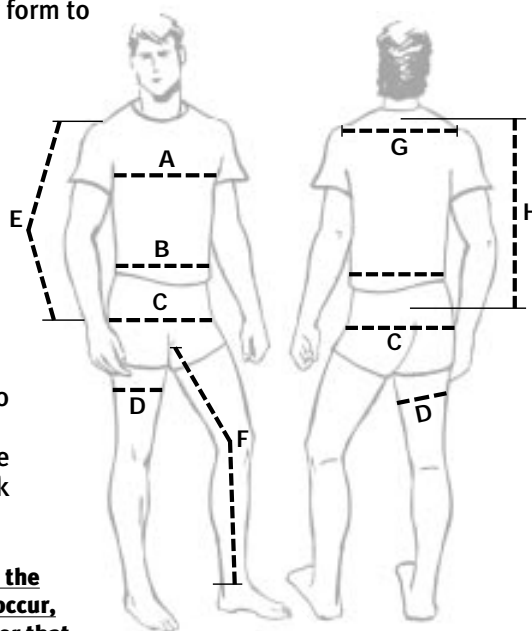
E - ARM - measurements to be taken from the shoulder point to the wrist.

F - INSIDE LEG - measurements to be taken on the internal part of leg, from the groin to the malleolus.

G - SHOULDERS - measurements to be taken from the right shoulder point to the left shoulder point.

H - BACK - measurements to be taken from the base of the neck to the waistline.

WARNING! If mistakes relating to the measures taken by the customer occur, OMP cannot be held responsible for that.



On to the collar of every suit, the FIA homologation number is embroidered in compliance with the regulations in force.



Name of the driver embroidered on to the suit: IA/690

WEARER'S MEASUREMENTS	46	48	50	52	54	56	58	60	62
WEIGHT (kg)	60/70	65/75	70/80	75/85	83/88	85/92	87/95	90/100	95/110
HEIGHT (cm)	158/170	165/175	170/180	173/183	177/187	182/190	185/195	187/198	190/200
A - CHEST (cm)	91/94	95/98	99/102	103/106	107/110	111/114	115/118	119/122	123/126
B - WAISTLINE (cm)	79/82	83/86	87/90	91/94	95/98	99/102	103/106	107/110	111/114
C - PELVIS (cm)	91/94	95/98	99/102	103/106	107/110	111/114	115/118	119/122	123/126
D - THIGH (cm)	51/54	53/56	55/58	57/60	59/62	61/63	63/66	65/68	67/70
E - ARM (cm)	58/62	60/64	62/66	64/68	66/70	68/72	70/74	71/75	71/75
F - INSIDE LEG (cm)	72/76	74/78	76/80	78/82	80/84	82/86	84/88	85/89	85/89
G - SHOULDERS (cm)	39/42	41/45	43/47	45/50	46/51	46/52	47/53	48/54	49/55
H - BACK (cm)	46/49	46/50	47/51	48/52	48/53	49/54	49/55	50/56	51/56

OMP racing s.r.l. via E. Bazzano, 5 - 16019 Ronco Scrivia - Genova - Italy - phone: (+39) 0109350571 - fax: (+39) 010935698 - E-mail: omp.info@ompracing.it

CUSTOMER

PATTERN

COLOUR
In case of two-colour suits, the first colour refers to the upper part of the suit.

Do the front part and the back part of the suit look the same? YES NO

STANDARD-TYPE FONTS FOR EMBROIDERIES

AB CDEFGH
abcdefgh Font **B**, suggested dimensions from cm. 0.89 to 10.16 in height.

ABCDEFGHIH
abcdefgh Font **D**, suggested dimensions from cm. 0.76 to 5.72 in height.

EMBROIDERY ON TO THE BELT YES NO **THREAD COLOUR**

If an embroidery is requested, what you write in the following box will be sewn on the belt (e.g. Name / Blood group)

QUANTITY	SIZE	Name and/or text that has to be sewn on to the belt

NOTES

CUSTOM-MADE DRAWINGS, COLOUR AND EMBROIDERIES

Please describe your personalization, referring to the directions mentioned in the previous page.

Colour - Indicate the colours you chose on the drawings

Stripes - Indicate their positions and thickness on to the drawings

Colour

Neck Jersey Fabric

Colour

Wrist cuffs

Colour

Ankle cuffs

Colour

Piping Colour



Shoulder strap Colour

Quilting

Thread colour

OMP Logo

X-mark its position on to the drawings

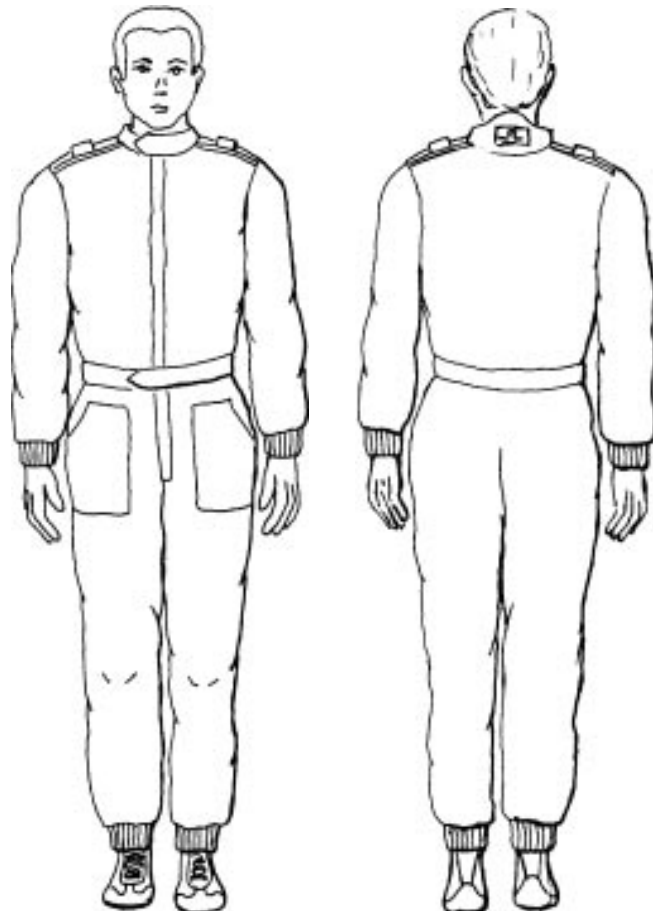
Badge Embroidery

Belt

Colour

Shoulder bellows

Colour



WEARER'S MEASURES

WEIGHT (kg)

HEIGHT (cm)

A - CHEST (cm)

B - WAISTLINE (cm)

C - PELVIS (cm)

D - THIGH (cm)

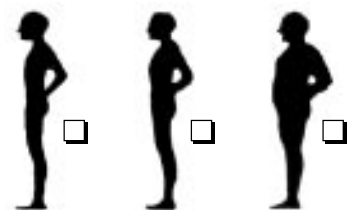
E - ARM (cm)

F - INSIDE LEG (cm)

G - SHOULDERS (cm)

H - BACK (cm)

BUILD

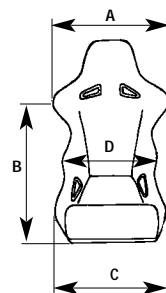
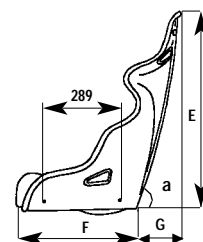


➔ Skicka oder per post eller fax. (+46) 0303-740895

SEAT DIMENSION TABLE

The following measurements are given as an indication. Please note that these may undergo changes according to production requirements. Particularly the weight of the seats in tubular steel frame and vacuum made may change up to 2% and 15% for all remaining models * = referring to lower fixing points of the sliding guide.

PART. No	MODEL	HOMOLOG.	FRAME MATERIAL	N.	DIM. IN cm										WEIGHT kg	FITTING	COLOURS			
					A	B	C	D	E	F	G	a	BLACK	RED			BLUE	BICOLOR		
HA/679	Ars	FIA	Kev./Carb.	5	58	60	47	33	91	45	16	80°	5.1	W	●					
HA/689	Ars fiberglass	FIA	Fibreglass	5	58	60	47	33	91	45	16	80°	7	W	●	●				
HA/644	Eco	FIA	Steel	4	50	56	47	35	84	48	15	78°	8.4	Y	●	●	●	●		
HA/690	Eco road	FIA	Steel	4	50	56	47	35	84	48	15	78°	8.4	Y	●					
HA/634	Extra	FIA	Steel	5	59	65	55	39	97	53	15	78°	9	Y	●	●				
HA/688	Grip	FIA	Fibreglass	5	58	60	52	35	88	50	14	70°	7.4	W	●	●		●		
HA/636	Grip k/carbon	FIA	Kev./Carb.	5	58	60	52	35	88	50	14	70°	6.9	W	●	●		●		
HA/684	Pista	FIA	Fibreglass	5	58	62	47	32	93	45	17	75°	8	W	●	●				
HA/686	Pista k/carbon	FIA	Kev./Carb.	5	58	62	47	32	93	45	17	75°	5.5	W	●					
HA/687	Record	FIA	Steel	5	57	70	50	32	90	49	9	75°	10	W	●			●		
HA/633	RS	FIA	Fibreglass	5	59	60	52	36	88	49	14	70°	7.4	W	●	●		●		
HA/638	RS sky	FIA	Fibreglass	5	58	60	52	34	88	50	14	70°	7.4	W	●					
HA/639	Strada 2000	/	Steel	2	54	58	50	39	89	60	/	70°	9	Y	●	●				
HA/641	Strada 2000 sky	/	Steel	2	54	58	50	39	89	60	/	70°	9	Y	●					
HA/646	Sport	/	Steel	4	54	58	51	36	87	48	8	80°	6.5	Y	●	●				
HA/649	Sport homol.	FIA	Steel	5	54	58	51	36	87	48	8	80°	9.8	Y	●	●		●		
HA/704	Sport sky homol.	FIA	Steel	5	54	58	51	36	87	48	8	80°	9.8	Y	●					
HA/703	Big	FIA	Fibreglass	5	66	61	54	42	94	50	14	75°	10	W	●	●				
HA/702	Comfort sky	/	Steel	2	54	60	50	33	93	53	/	/	10	Y	●					
HA/700	Comfort duo	/	Steel	2	54	60	50	33	93	53	/	/	10	Y	●					
HA/642	Comfort	/	Steel	2	54	60	50	33	93	53	/	/	10	Y	●	●	●	●		
HA/701	WRC leather	FIA	Carb.	5	59	61	47	35	91	47	14	75°	5.5	W						
HA/705	WRC fiberglass	FIA	Fibreglass	5	59	61	47	36	91	47	14	75°	7.4	W	●	●	●			
HA/640	WRC carbon	FIA	Carb.	5	59	61	47	35	91	47	14	75°	5.5	W	●	●				
HA/678	VID colore	/	Fibreglass	4	58	57	49	33	89	42	22	85°	7	W	●	●	●			
HA/692	Granturismo	/	Steel	2	47	69	52	34	96	50	/	/	12	Y						



- A: external max width at shoulders.
- B: from seat bottom to mid shoulder
- C: sitting external max width
- D: inside max width at hips
- E: max height from seat bottom
- F: sitting depth
- G: horizontal seat back projection
- a: back inclination

SEAT FITTING TYPE: According to FIA regulations the seat has to be fixed to the brackets by means of at least four bolts M8 class 8.8. Here below please find distances between centres of the fixing holes, in mm.

- TYPE W: INNER SIDE int. 289 mm
- TYPE K: INNER SIDE int. 289 mm and LOWER 345x270 (mm)
- TYPE Y: LOWER 345x270 (mm)

